

**D2101V**

## IP VIDEO DOOR STATION

For single-family houses and commercial buildings with 1 unit  
1 Call Button

# ANSWER YOUR DOOR ANYWHERE.

## ADVANTAGES

### HOW DOES IT WORK?

Imagine, you are not at home and your children have locked themselves out or the courier wants to deliver a parcel. With DoorBird this is no longer a problem. Every time someone rings the doorbell you will get a push notification on your smartphone or tablet. Via the DoorBird App you are not only able to talk to the visitor but also see them live in HD quality. You will never miss a visitor again. With DoorBird you are on the move and yet at home, even if a burglar rings at the door to check if someone is at home.

### SMART HOME STARTS AT THE FRONT DOOR

DoorBird is the smart solution for your house entrance. Simply connect your DoorBird IP Video Door Station to your smartphone and talk to your visitor - anywhere you are. The IP Video Door Station can be used as a stand-alone unit or can be integrated into an existing Smart Home platform. Even existing classic installations such as a door chime or an electric door opener can still be used and controlled via the DoorBird App.

### QUALITY MADE IN GERMANY

All DoorBird products are designed, developed and produced by Bird Home Automation GmbH in Berlin, Germany. We manufacture all products with the greatest care and precision, and deliver them to our customers all over the world.



#### Open API

- Local interface for integration with third-party systems and SIP



#### Video and audio call

- On smartphones, tablets (iOS, Android), IP and landline phones (SIP)



#### Smart Transmission Mode (STM)

- Real-time audio / video communication, optimized for mobile devices via WiFi, 3G, 4G, 5G



#### Smart Home & NVR compatible

- Control4, Loxone, Crestron, Synology, AVM FRITZ!Fon, URC, QNAP, RTI, ELAN, Fibaro, Bang & Olufsen and others



#### Automatic door buzzer

- For use in medical offices and office environments

#### HD HDTV Video

- Ultra wide-angle, hemispheric lens, 180°

#### 4D Motion sensor with 4D technology

- Distance up to 10 m adjustable via App (interval: 1 m)



#### Free visitor history

- Store still images for free, optional video recording available



#### Light sensor

- For night vision mode



#### Call button

- With backlit nameplate



#### Individual action schedules, e.g.:

- RFID card „abc“ has only access on Wednesday from 9 am until 11 am
- 4D motion sensor switches on external lamp between 9 pm and 6 am



#### Microphone

- Clear voice transmission



#### Easy connection to the network

- Connection via a network cable or a bell wire (with a 2-wire transformer) to a RJ45 socket (PoE, network data)



#### Geofencing

- Automatic door and gate opening when returning home



#### Noise reduction and echo cancellation (AEC, ANR)



#### Two freely configurable bi-stable switching relays

- Two doors or gates can be controlled via App
- Status configurable via App: temporary or permanent circuit



#### Night vision

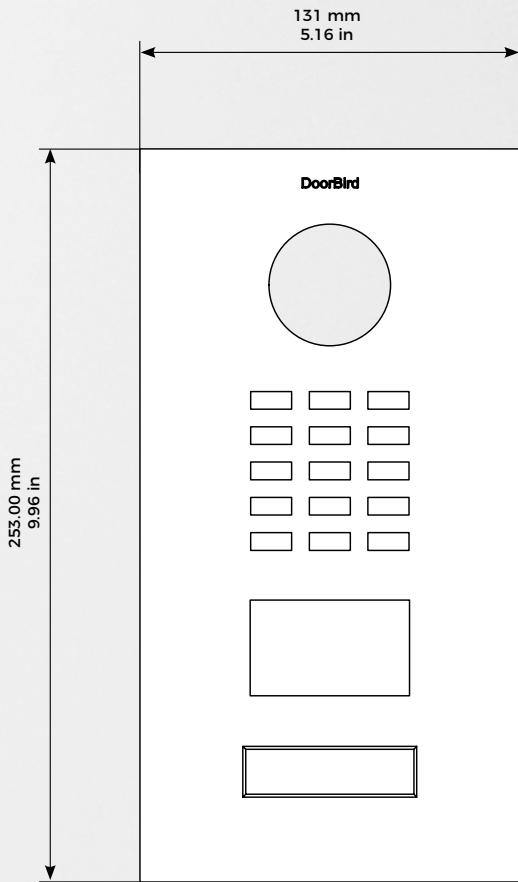
- With 12 Infrared LEDs



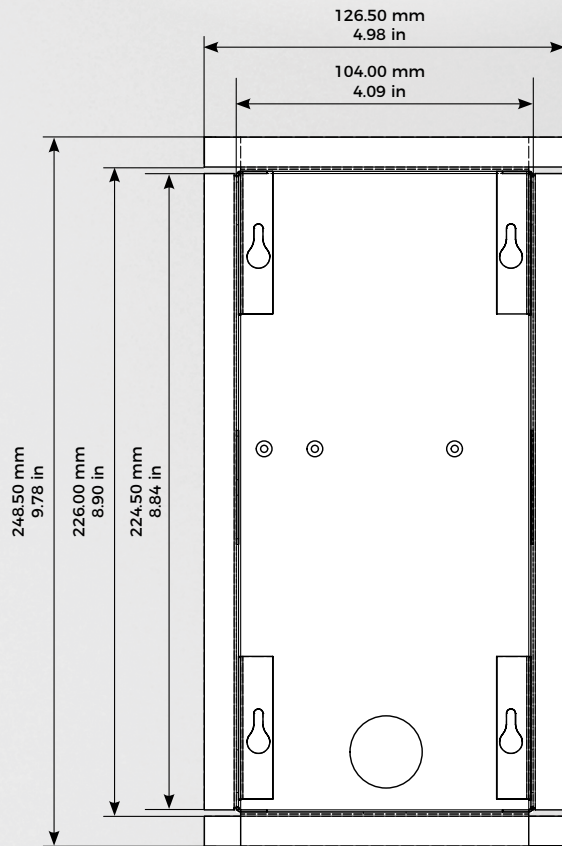
#### RFID card reader

- Configurable remotely via App (e. g. time frame)

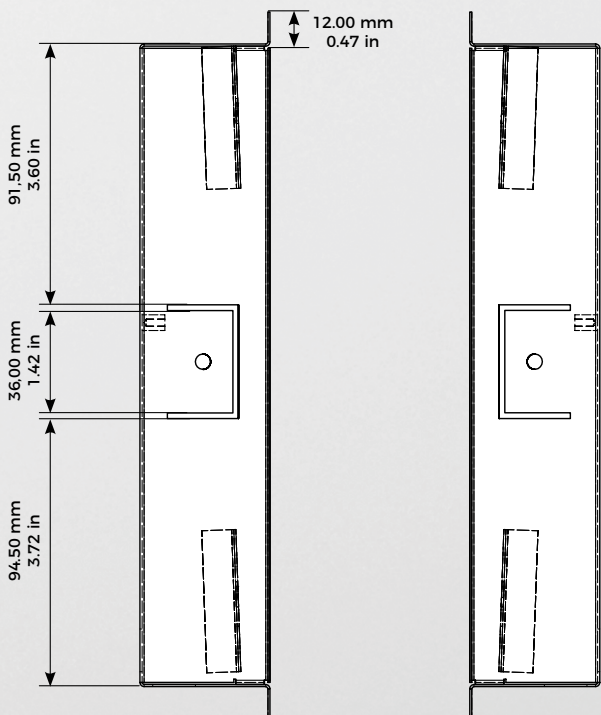
Front panel material thickness: 3.0 mm (0.12 in)



Front panel

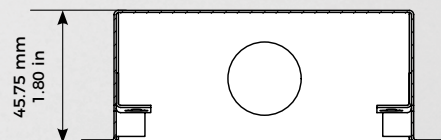


Flush-mounting housing (backbox)



Flush-mounting housing (backbox)

Flush-mounting housing (backbox)



Flush-mounting housing (backbox)

## TECHNICAL SPECIFICATIONS

### GENERAL

Front panel	3 mm (0.12 in) Available in over 50 RAL colors and surfaces including stainless steel V2A / V4A (see material guide)
Mounting housing (backbox)	Stainless steel
Mounting type	Flush-mounted, surface-mounting housing sold separately
Call button	Plastic. Engravable metal nameplate sold separately, see <a href="http://www.doorbird.com/buy">www.doorbird.com/buy</a>
Nameplate	Illuminated
Power supply	15 V DC (max. 15 W) or Power over Ethernet (PoE 802.3af Mode-A)
Weight	1577 g
Connectors	<ul style="list-style-type: none"> <li>• RJ45, for LAN/PoE</li> <li>• Bi-stable latching relay #1, max. 24 V DC/AC, 1 Ampere, e.g. for electric door opener</li> <li>• Bi-stable latching relay #2, max. 24 V DC/AC, 1 Ampere, e.g. for electric door opener</li> <li>• External input for external door opener button (potential-free)</li> <li>• 15 V DC input (+, -), max. 15 W</li> <li>• Relays can be expanded / detached with DoorBird I/O Door Controller</li> </ul>
Weather-proof	Yes, IP65
Approvals	IP65, CE, FCC, IC, RoHS, IK08, REACH, IEC/EN 62368, IEC/EN 62471
Dimensions	253 x 131 x 48,75 mm (H x W x D) 9,96 x 5,16 x 1,92 in (H x W x D)
Operating conditions	-25 to +55°C / -13 to 131°F Humidity 10 to 85 % RH (non condensing)
Scope of delivery	1x Main Electrical Unit 1x Front panel 1x Flush-mounting housing (backbox) 1x Power supply unit (mains adaptor) with four country-specific outlet adaptors (110 - 240 V AC to 15 V DC) 1x RFID key fob 1x Screwdriver 1x Quickstart guide with Digital Passport 1x Installation manual 1x Small parts
Warranty	see <a href="http://www.doorbird.com/warranty">www.doorbird.com/warranty</a>

### CURRENT SYSTEM REQUIREMENTS

System requirements	<p>Mobile device: Newest iOS on iPhone/iPad, newest Android on Smartphone/Tablet</p> <p>Internet: High-Speed Landline Broadband Internet connection, DSL, cable or fiber optic, no socks or proxy server</p> <p>Network: Ethernet Network, with DHCP</p>
Recommended installation height	Camera lens should be at a min. height of 145 cm (57 in). Before the installation please determine your optimal installation height.

### VIDEO

Camera	HDTV 720p, dynamic (VGA - HDTV)
Lens	High-end ultra wide-angle hemispheric lens 180° (D), 140° (H), 100° (V), straightened, IR-capable
Night-vision	Yes, light sensor, automatic IR-cut filter, 12 Infrared LEDs (850 nm)

### AUDIO

Audio components	Speaker and microphone, noise reduction and echo cancellation (ANR, AEC)
Audio streaming	Two-way, full duplex

### NETWORK

Ethernet	RJ45 jack, PoE 802.3af Mode-A, 10/100 Base-T
Supported protocols	HTTP, HTTPS, SSL/TLS, Bonjour, DNS, RTSP, RTP, TCP, UDP, RTCP, ICMP, DHCP, ARP, SIP, DTMF (RTP [RFC-2833], SIP INFO [RFC-2976]), STM

### MOTION SENSOR

Type	Active
Detection angle	54° (H), 70° (V)
Range	1 - 10 m (3.3 - 32.9 ft), depends on environment, configurable in 1 m (3.3 ft) steps.
Technology	4D. Based on multiple integrated sensors and algorithms, e.g. Radio Frequency Energy (RFE)
Configuration	Via App, e.g. <ul style="list-style-type: none"> <li>• Range (1 - 10 m / 3.3 - 32.9 ft)</li> <li>• Movement direction (coming, leaving, both)</li> <li>• Individual events (e.g. switch a relay, push notification, SIP call [audio/video], HTTP(s) notification)</li> <li>• Individual schedules</li> </ul>

### RFID

Type	Active Reader Passive Tag (ARPT) system
Standard	ISO/IEC 18000-2:2009 Part 2, EM4100, EM4102
Frequency	125 KHz
Range	0 - 3 cm, depends on environment
Antenna	Internal
Compatible Transponder	RFID key fobs, sold separately, see <a href="http://www.doorbird.com/buy">www.doorbird.com/buy</a>
Configuration	Up to 100 tags manageable  Via App, e.g. <ul style="list-style-type: none"> <li>• Tag (add, delete)</li> <li>• Individual events (e.g. switch a relay, SIP call [audio/video], HTTP(s) notification)</li> <li>• Individual schedules</li> </ul>

### INTEGRATED WIRELESS MODULES

RFID	125 KHz
Sensor	24 GHz, can be disabled

### THIRD-PARTY INTEGRATION (DOORBIRD CONNECT)

Partnerintegrations	see <a href="http://www.doorbird.com/connect">www.doorbird.com/connect</a>
API	see <a href="http://www.doorbird.com/api">www.doorbird.com/api</a>
Simultaneous video streams	One, for event-based and continuous recording

### OPTIONAL ACCESSORIES

Sold separately	see <a href="http://www.doorbird.com/buy">www.doorbird.com/buy</a>
-----------------	--

Special remarks:  
Assembly requires professional skills or a technician.